

ADVANCED SOLUTIONS FOR **Manufacturing**

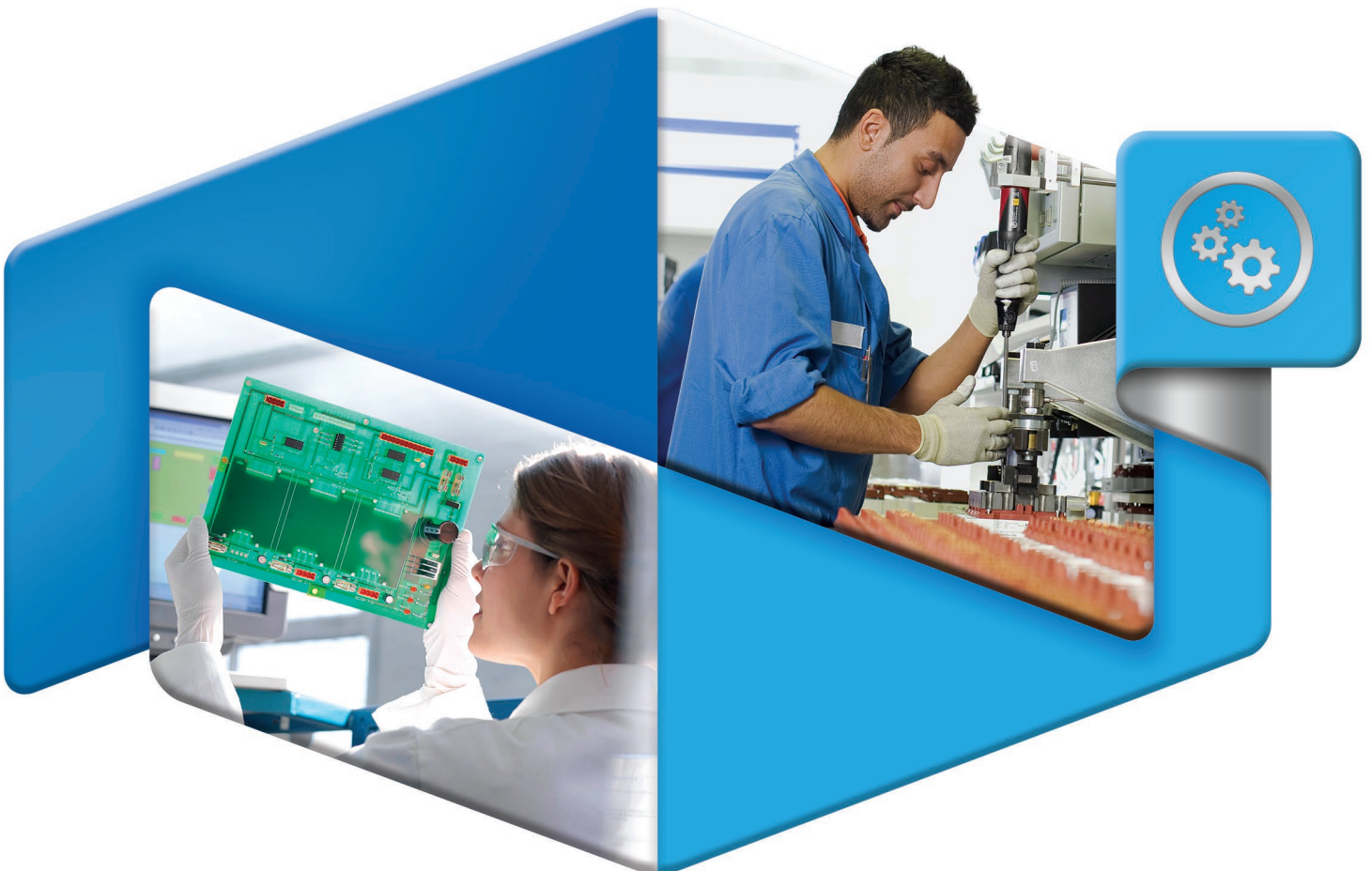
Protect company IP and trade secrets

Streamline manufacturing documents

Improve collaboration and product development

Manage compliance and sustainability

Reduce costs and stay lean



Solutions for today's manufacturing challenges.

To succeed, a manufacturer must excel on several fronts. Relentless competition, rising energy costs, and strict regulation compel manufacturers to operate more efficiently, get new products to market faster, protect trade secrets, and be prepared to satisfy compliance requests at any time.

Manufacturing challenges



Proactively maximizing operational efficiencies

Manufacturers are constantly looking to reduce costs, streamline operations, and generate new products faster than competitors. While most manufacturing executives are open to new technologies to help achieve these goals, improved document handling has been critically overlooked.



Improving security and protecting intellectual property

It's difficult to overstate the importance of securing product designs, formulas, strategic plans, and other proprietary information. Manufacturers need better ways to monitor information, protect confidential documents, and restrict unauthorized access at their office MFP devices.



Satisfying regulations and compliance issues

Manufacturers must regularly keep up with legislation designed to help ensure that products are developed to comply with these standards, and that they're safe for end-use. In order to manage costs, prevent unnecessary audits, and protect against litigation, manufacturers need solutions that can help organize documents and speed compliance requests.

Real solutions from Canon

As an experienced manufacturer, Canon leverages valuable institutional knowledge to help your company address these challenges. Canon provides a wide range of hardware and software technologies to help you better control costs, streamline operations, and get new products to market quickly.

Canon solutions can help increase efficiency by automating and streamlining document workflow, controlling MFP device access, tracking document-related activity expenses, protecting important data, and promoting compliance with regulatory requirements.



Protect intellectual property and help secure confidential manufacturing documents

Unfettered employee access to MFPs can lead to misplaced, misdirected, or stolen documents, which can have a devastating impact on your business. Canon offers a range of security solutions designed to help ensure that your printed, scanned, and stored information remains confidential.



Limit device access to authorized personnel

With Canon solutions, you control who is authorized to access, print, copy, fax, or scan important documents like blueprints, schematics, strategic plans, and supplier agreements from your MFPs. You can facilitate authorized device access with user IDs, passwords, and Proximity Cards for manufacturers or CAC/PIV for government contractors. Access to documents and device functionality can also be managed based on roles set up in your Active Directory.



Universal Login Manager, AA-PRINT, and uniFLOW provide device authentication solutions for any size operation.



The Canon Access Management System (AMS) allows you to enable and restrict user access to key functionality based on authentication and user credentials.

Help secure confidential data in printed documents

Documents containing formulas, recipes, product designs, strategic plans, or other sensitive information can pose a serious threat when left on output trays. Canon provides serverless (AA-Print), driver-based (Secure Print, Encrypted Secure Print), and server-based (uniFLOW) secure printing solutions to help safeguard this information. These technologies enable you to configure MFPs to require user authentication before any printout can be retrieved.



Users can be required to authenticate at the device before retrieving printouts.

Monitor secure words and help prevent IP theft

At the enterprise level, Canon imageWARE Secure Audit Manager Express with uniFLOW can monitor device activity, track key words or phrases, and alert IT staff to potential information leaks. If confidential information is scanned, printed, copied, faxed, or distributed through your Canon MFP device, your IT staff can be informed immediately and take action when needed.



Canon imageWARE Secure Audit Manager Express can be set to track document-related MFP activity and to notify your IT administrator when specific key words are detected.

Safeguard electronic documents and digital device data

Other potential vulnerabilities can be device hard drives that store proprietary formulas, recipes, designs, or strategic plans. Canon security solutions help protect intellectual property and help facilitate industry compliance.



The standard **HDD format** provides up to 9x overwrite for all stored manufacturing operations and intellectual property data when devices reach end-of-life.



The **HDD Data Erase Kit** ensures that sensitive data is deleted on a daily basis and properly erased with standard format overwriting (up to 3x) as a part of routine job processing.



The optional **HDD Data Encryption Kit** uses AES 256-bit encryption to help protect all data stored on the internal hard drive.



The standard **HDD Erase Scheduler** enables you to set devices to automatically erase all copy, scan, print, and other activity data from hard drives on a set schedule.

Tap into valuable document data and upgrade to an agile operation

An alarming number of hard-copy and electronic documents wind up in paper silos, strewn across numerous filing cabinets and hard drives. Canon offers solutions to help organize and integrate information from these documents, so you can find information quickly and help expedite decision-making.



Capture, combine, and archive critical data from important documents

Now you can save time and boost the value of your electronic archives by converting and combining volumes of documents. Canon solutions enable you to capture, combine, and customize blueprints, schematics, tool approvals, quotes, contracts, bill of materials, and more into archives that can be quickly retrieved and integrated into automated workflows.



Combining scanned hard-copy files into a single document ready for printing or distributing can be as easy as drag-and-drop with imageRUNNER ADVANCE Desktop.

Simplify multistep processes into more efficient workflow buttons

Canon Workflow Composer enables manufacturers to simplify everyday, multistep workflows with one-touch buttons. These customizable buttons allow authorized staff to execute tasks in a fast, accurate, and consistent fashion. Automated workflows like these help prevent errors, reduce waste, bolster security, and contribute toward improved supply chain performance.



With a press of the Workflow Composer button, a combination of document activities, such as scanning, archiving, and sending, can be completed as a one-set workflow.

Integrate paper and electronic document data into back-end systems

Canon imageRUNNER ADVANCE MFPs with eCopy ShareScan connectors enable your staff to automatically process information captured from contracts, schedules, reports, and other hard-copy documents. Once collected, that valuable data can be intelligently connected to your back-end systems.



Now, your operational documents can be scanned, indexed, and processed into application software with ease.

Help allow authorized and secure document file handling privileges

You can leverage Canon solutions, like Authorized Send, to facilitate simple document sending and archiving to network folders or popular storage solutions, such as Microsoft® SharePoint.



Automate your document archiving and distribution with secure Authorized Send for fax, e-mail, and secure folders.

Maximize operational efficiency by managing document-related activities

Rolling out a new policy doesn't automatically translate into reduced costs; it's the manufacturers that enforce those rules that benefit from them. Canon output management solutions facilitate a wide range of ways to enforce print policies, reduce waste, and gain practical insight from printer usage.



Establish access control, set printing rules, and monitor usage via reporting

Many manufacturers face a dilemma—they need to allow copy, print, scan, and send privileges for key management personnel, yet they must restrict MFP device access for others within the organization.

Canon solutions don't make you trade productivity for security and cost management. uniFLOW enables you to gain control over all print usage, even across a large manufacturing operation. You can limit user access to more costly operations, proactively manage your fleet, and even create detailed, analytical reports to identify other areas where you can help reduce costs.

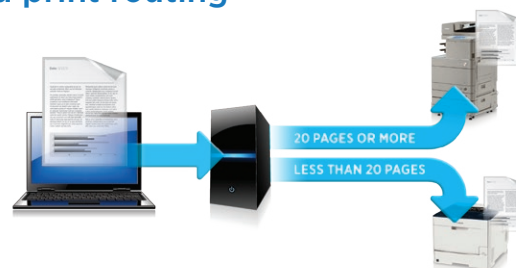
Contract Worker	Floor Managers	Executives
<input type="checkbox"/> B/W Copy	<input checked="" type="checkbox"/> B/W Copy	<input checked="" type="checkbox"/> B/W Copy
<input type="checkbox"/> Color Copy	<input type="checkbox"/> Color Copy	<input checked="" type="checkbox"/> Color Copy
<input checked="" type="checkbox"/> B/W Print	<input checked="" type="checkbox"/> B/W Print	<input checked="" type="checkbox"/> B/W Print
<input type="checkbox"/> Scan	<input checked="" type="checkbox"/> Scan	<input checked="" type="checkbox"/> Scan
<input type="checkbox"/> Send	<input checked="" type="checkbox"/> Send	<input checked="" type="checkbox"/> Send
<input type="checkbox"/> Fax Send	<input type="checkbox"/> Fax Send	<input checked="" type="checkbox"/> Fax Send

Profiles can be set according to user or role that enable or restrict access to specific device functionality as needed.

Manage document-related costs with rules-based print routing

When staff members print documents based on convenience or proximity to an MFP device, it leads to higher per-page costs, which increase operating costs overall.

uniFLOW lets you gain control over your networked print devices and create rules to route jobs to the most cost-efficient, multifunction printers when warranted.



Facilitate cost-efficient network printing with uniFLOW rules-based routing.

Track and accurately bill document expenses back to specific cost centers

It's hard to assess the profitability of specific products or operation areas when you don't know the source of all your print-related expenses. uniFLOW enables you to easily track device-related expenses by user, group, department, and more. The flexible, customizable solution lets you generate detailed activity reports, so you can accurately charge costs back to specific users or internal departments as needed.



Detailed tracking and activity reports can help monitor usage and aide in billing back departments.

Streamline Product Lifecycle Management and help speed products to market

Canon provides advanced solutions designed to help your manufacturing operation share concepts, collaborate on designs, exchange CAD files, gain consensus during product review, expedite development, manage costs, and reduce overall time to market.

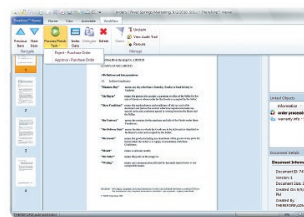


Facilitate secure collaboration between key stakeholders

Whether focusing on current production or new product development, precise coordination between manufacturing and development teams is often vital to success. Canon offers a range of secure document storage and collaboration tools to help your manufacturing staff manage projects, create and store safety data sheets, process change request forms, satisfy quality control checklists, and much more.



Canon imageRUNNER ADVANCE Desktop Windows® PC-compatible application enables your authorized manufacturing staff to convert paper documents into digital formats and combine pages from many different types of source documents into one new, comprehensive version that can be printed, shared, or archived.



Therefore™ is a powerful information management solution featuring Workflow functionality. Through its easy-to-use, visual interface, Workflow enables you to create customized, automated approval process workflows that will help keep internal reviews and sign-offs flowing smoothly.

Generate visuals and presentations that match the scale of your vision

Office documents with conventional page sizes are suitable for everyday business communication. But a manufacturing operation may require access to larger documents in order to effectively communicate ideas in product concepts, storyboards, CAD drawings, plant layouts, production line changes, facility improvement plans, and more. Canon offers innovative, large-format printing solutions designed to deliver exceptional speed, flexibility, and quality.



Help expedite your approvals process by showcasing your CAD designs with large, crisp prints.

Refine concepts quickly through immersive digital prototyping

Though a widely accepted part of product development, physical prototyping requires time and materials that prolong testing and can delay time to market.

The Canon MREAL System for Mixed Reality seamlessly combines the virtual world of computer-generated imagery (CGI) with your real-world environment. This better enables your development teams to shepherd product ideas from concept to reality in less time. MREAL technology can help you quickly confirm design assumptions, incorporate required characteristics faster, identify potential design concerns, reduce prototype iterations, and get products to market sooner.



Transition designs right from applications like Siemens NX and RTT DeltaGen into the mixed reality world with the exact same specs, scale, spaces, and precision you designed.

Facilitate automated processes that leverage valuable document data

In the battle to innovate and speed products to market, technology can be a great asset. But, too often, document handling is overlooked. Canon solutions enable you to leverage previously untapped information to improve reports, customize marketing materials, and manage key operational workflows.



Generate targeted, customized marketing efforts in less time

Like any company, manufacturers look to cultivate new business and evaluate those efforts. So why not simplify the processes required to generate quotations and professionally branded sales support materials? Now, you can connect Canon solutions with your in-house CRM intelligence to facilitate easy order processing and track campaign results on the back-end.

Canon offers a cloud-based “Forms and Print” Services that empowers Salesforce.com users to print customized, dynamic quotes and reports anywhere in minutes—and in batches when needed. Canon Professional Services can help you improve business processes through a collaborative consultation.



Streamline your sales process with customized forms, reports, and quotations generated from your Salesforce.com CRM through Canon “Forms and Print” Services.

Keep important business processes moving forward with Therefore™

Why must business processes come to a standstill because one person in the review chain fails to take action when needed? Similarly, why let your business be sidelined by document searches or compliance requests?

Therefore™ information management system’s Workflow enables you to design and establish electronic-based workflows to help ensure business processes move forward more reliably. Staff can easily collaborate on documents, track revisions, schedule document removal dates, facilitate digital approvals, and more. Therefore also enables authorized staff to quickly and conveniently access the needed information from almost anywhere—from your office or through qualified mobile devices when desired.

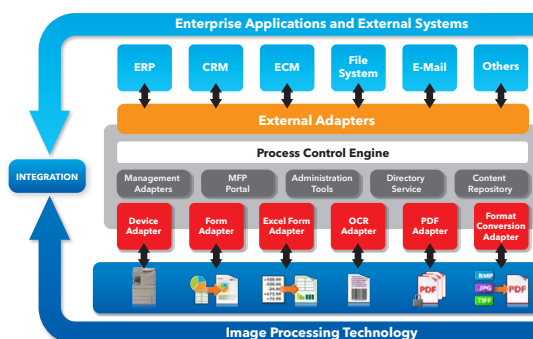


Documents can be easily scanned and indexed, then archived to Therefore™ directly from the MFP’s display panel.

Unlock hidden potential of systems you might not expect to cooperate

It doesn’t serve a business well to let paper and electronic documents languish in disconnected and untapped silos across an enterprise. This is especially true when that information can be captured, identified, indexed, and distributed to help foster increased innovation, mitigate compliance issues, and fuel new efficiencies.

Canon’s Enterprise Imaging Platform (EIP) is a middleware platform that can be used to facilitate improved collaboration between critical systems and manufacturing software applications. With EIP, your firm can connect information stored in multiple enterprise applications, such as ERP, CRM, ECM, and enable easy access to information when and where needed. Documents can also be integrated from multiple enterprise software applications, and shared and streamlined within an automated process.



Enterprise Imaging Platform can be especially useful in merger and acquisition situations where different systems aren’t initially designed to communicate with one another.

Solutions that boost sustainability and environmentally conscious behavior

Canon strives to meet the most exacting environmental regulations by developing products designed to help improve efficiency, conserve energy, and reduce waste. When leveraging Canon products, you're well-positioned to facilitate compliance with industry regulations and manage a more sustainable operation overall.



Canon's commitment to the environment

As an ENERGY STAR® partner since 1993, Canon has qualified more than 200 products that incorporate original and advanced energy-efficient technologies, without compromising features or performance. Canon multifunction devices have received ENERGY STAR awards for cost- and energy-saving features.

Reduced warm-up time and heat usage

imageRUNNER ADVANCE systems feature key printing elements that can heat up quickly and print at lower temperatures. This helps reduce energy costs and enables staff to begin using the devices more quickly.

Recycle-conscious designs

Canon development teams consider all stages in each product's life cycle, striving to maximize the use of plastics that have already been introduced into the environment wherever possible.

Better scanning with less energy

Scanning continues to be critical activity in the manufacturing industry. Canon provides the technology in imageRUNNER ADVANCE devices to help reduce scanning power consumption by up to 75% compared with other models.

Smaller, lighter products

Canon strives to make its products the very smallest and lightest available. This effort helps reduce the amount of energy needed for transport from its factory to yours.

One-watt Sleep mode

With one-watt Sleep mode, imageRUNNER ADVANCE devices can lower energy consumption, even when the device is not in use. This feature also helps keep costs down.

Toner cartridge recycling

To help support your facility's local recycling efforts, a plastic resin code is engraved on each toner cartridge. In the event that Canon plastic toner cartridges can't be recycled locally, Canon also offers a collection program.

Reducing waste

Canon systems enable you to implement smart printing policies, such as secured printing, default duplex printing, and fax forwarding.



Canon is proud to offer EPEAT registered products, helping governments, businesses, and individuals identify solutions that can help reduce their environmental impact.

Utilize the imageRUNNER ADVANCED SOLUTIONS to their full potential with professional services from Canon Solutions America

When selecting and implementing new technology, a highly skilled technical team is the difference-maker for a successful deployment. Canon Solutions America has the team of experts you need to help you acquire the right technology, solutions, and services for your organization. Our team of technical professionals draws upon decades of technical expertise and real-world experience to ensure you obtain the maximum benefit from your technology investment.

Canon

CANON SOLUTIONS AMERICA

Some features described in this brochure may be optional or require additional components depending on the model. CANON, imageRUNNER, and MEAP are registered trademarks of Canon Inc. in the United States and may also be registered trademarks or trademarks in other countries. IMAGEWARE is a registered trademark of Canon U.S.A., Inc. in the United States and is a trademark of Canon Inc. in certain other countries. ENERGY STAR and the ENERGY STAR mark are registered U.S. marks. Windows is a registered trademark of the Microsoft Corporation in the United States and/or other countries. All other referenced product names and marks are trademarks of their respective owners and hereby acknowledged. Specifications and availability are subject to change without notice. All printer output images are simulated. Nothing in this brochure should be construed as legal counsel or regulatory compliance advice, including without limitation with respect to statutes such as Sarbanes-Oxley, HIPAA, GLBA, Check 21 or the USA Patriot Act. Each customer must have its own qualified counsel determine the advisability of a particular solution as it relates to regulatory and statutory compliance.

© Canon U.S.A., Inc. All rights reserved.